

# AWNING

*Awning Windows open out and upward for maximum ventilation*



**FULL FUSION WELDED FRAME CORNERS**  
Provide strength and rigidity

**FULL FUSION WELDED SASH CORNERS**  
Provide stability for the sash structure

**EXTERIOR VIEW**

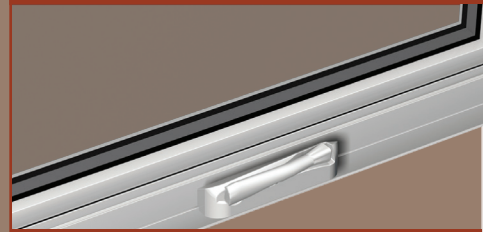
**LEFT AND RIGHT SASH LOCKS**

**SCISSORS AWNING OPERATOR**  
Inside handle folds down to minimize interference with draperies and blinds

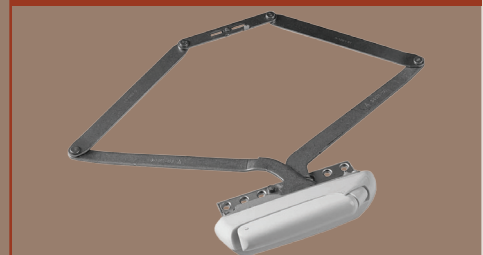
**TRIPLE WEATHERSTRIPPING**  
Blocks infiltration of air, water and dust and reduces noise



**DUAL LOCK ACTUATORS**  
Secures the sash



**OPERATOR**  
The operator handle folds down to minimize interference with draperies and blinds.



**STAINLESS STEEL OPERATORS**  
Stainless steel components allow for smooth, low wear connection joints.



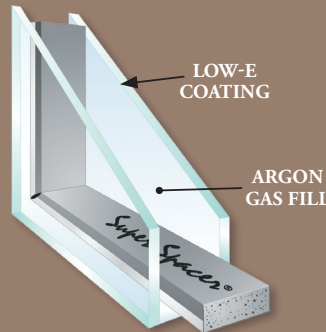
**NEW CONSTRUCTION WINDOW**  
Available with integral nail fin.



**ENERGY EFFICIENCY ACHIEVED THROUGH ADVANCED HIGH TECH INSULATED GLASS SOLUTIONS**



**GLASS BREAKAGE WARRANTY**



**7/8" DOUBLE STRENGTH DUAL GLAZED WITH LOW-E COATING & ARGON GAS**

## Window Options

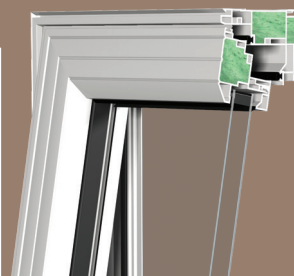
**White**

**Brown**

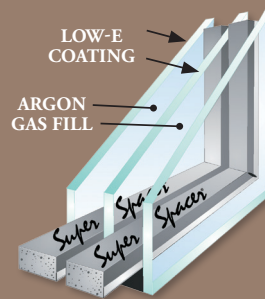
**Sandalwood**

**Natural Wood Grain**

**Cherry Wood Grain**



**FOAM FILLED INJECTED**  
Targeted chambers completely filled for increased U-Value.



**TRIPLE GLAZED**  
Two panes of Low-E glass & one pane of clear glass with Argon Gas in both chambers.

**GRID PROFILES**

**Flat**

**Contour**

▼ Prairie Grid Pattern



▼ Colonial Grid Pattern



**COLOR COORDINATED GRIDS**

Grids are installed between the glass panes during manufacturing for easy cleaning.

**EXTERIOR VINYL COLOR CHOICES**  
(interior color is white)

**INTERIOR WOOD GRAIN COLOR CHOICES**  
(replacement models only)